





ESCAPE TO A TROPICAL PARADISE

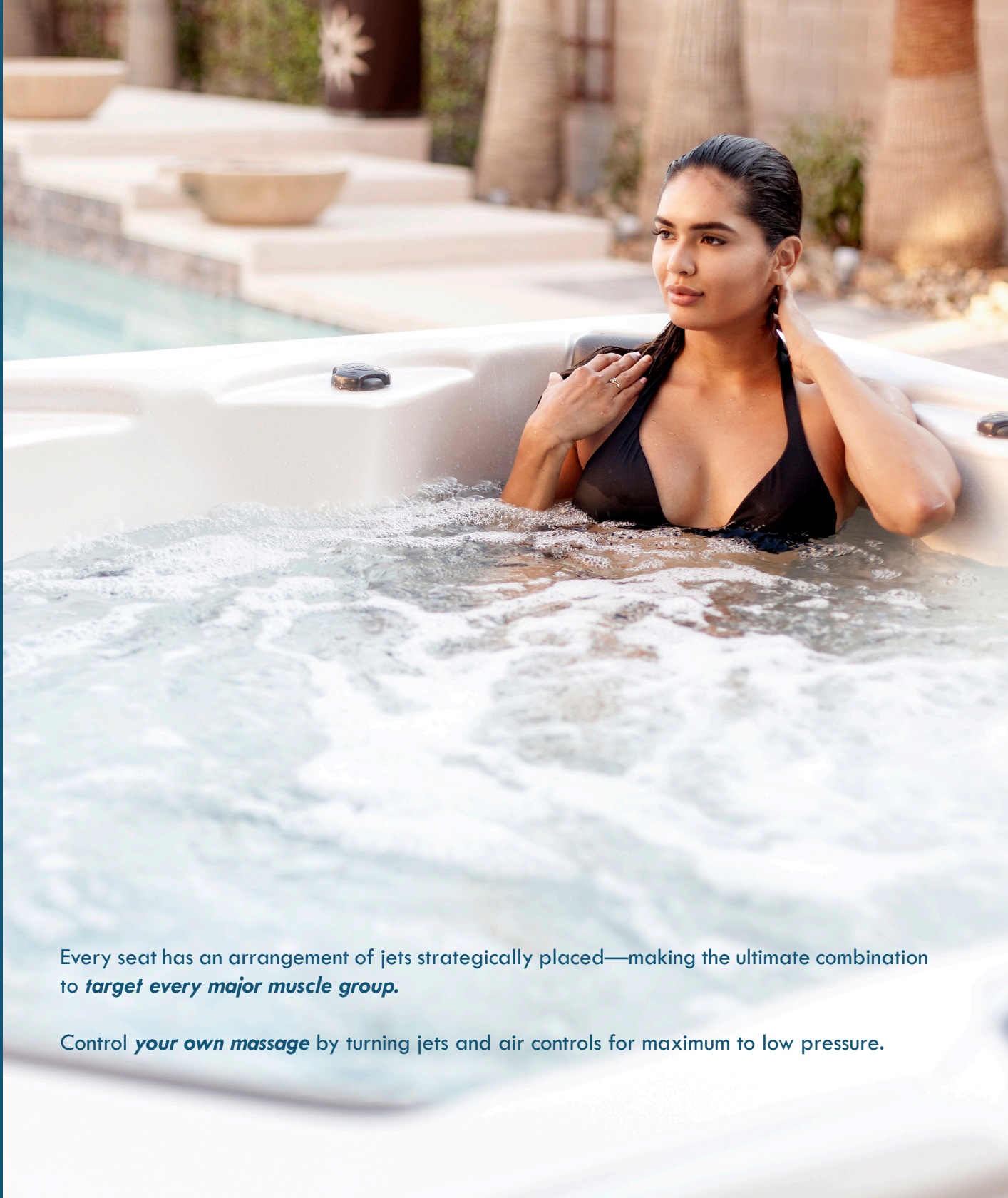
Tropic Seas Spas brings **paradise** to your backyard. Escape to a relaxing retreat and enjoy the ultimate hydrotherapy massage that leaves you feeling refreshed and recharged. Each Tropic Seas Spa has been handcrafted to provide a feature-rich, optimal mix of elegance and functionality. These spas are built with the ideal combination of innovative engineering and energy efficiency.

Sink in, sit back, relax and enjoy the many features ranging from the sophisticated jet system to the LED lighting. A passion to detail and commitment to the highest standards are evident in all Tropic Seas Spas models.

THE ULTIMATE MASSAGE

Tropic Seas' advanced jet design offers an *amazing hydrotherapy massage*. Each spa comes with a complete therapy system that is comprised of different types and sizes of jets.

Roto jets push water in a right-directional spiral to create a unique water pattern that intensifies your massage. Perfect pressure is provided with Direct jets that range from two to five inches in diameter.



Every seat has an arrangement of jets strategically placed—making the ultimate combination to *target every major muscle group*.

Control *your own massage* by turning jets and air controls for maximum to low pressure.

HAND-SCULPTED FOR YOUR BODY



ARTISTRY

Tropic Seas Spas combine handcrafted artistry and ergonomic design to create *the ultimate spa* experience. Graphite grey accents highlight the spas' beautifully sculpted lines. Comfortable, ergonomic seats are at varied depths to accommodate different spa users. Dramatic textured seat and floor surfaces provide a sensational massage on your feet and toes.

Sit in the cool-down seat and take advantage of the unique massage nodes that gently caress your back.

AMBIANCE

The peaceful TropicFall provides color therapy and the soothing sounds of falling water — creating a *relaxing environment*.



WATER PURIFICATION OPTIONS



O₃ Infusing Chamber

This system combines the Microfiltration, a high efficiency Circulation Pump, Ozone and the ProPure™ Mixing Chamber.



Optix AOP™

The Optix AOP™ sanitation lamp is fully serviceable, eliminating the need for AOP unit replacement. Indicator LEDs change colors to provide an alert for the need to replace the UV-C sanitation lamp. The AOP unit utilizes a dedicated Corona Discharge (CD) ozone generator in conjunction with UV-C to provide a highly effective sanitation process.



FROG® @ease™

Tropic Seas Spas brings you the patented In-Line FROG® @ease™ system. This breakthrough system in water-care combines Fresh Mineral Water™ with self-regulating SmartChlor™ Technology.

Tahiti

965L



108 in. x 91 in. x 36 in.
274 cm x 231 cm x 91 cm

8 Seats 65 Jets

1100 lbs | 499 kg
495 gal | 1874 L

- (1) 5.0 BHP (3.0 HP continuous) 2-Spd
- (1) 5.0 BHP (3.0 HP continuous) 1-Spd
- (1) 3.0 BHP (1.5 HP continuous) 1-Spd

Waikiki

864L



91 in. x 91 in. x 36 in.
231 cm x 231 cm x 91 cm

6 Seats 64 Jets

800 lbs | 363 kg
395 gal | 1495 L

- (1) 5.0 BHP (3.0 HP continuous) 2-Spd
- (1) 5.0 BHP (3.0 HP continuous) 1-Spd
- (1) 3.0 BHP (1.5 HP continuous) 1-Spd

Oahu

864B



91 in. x 91 in. x 36 in.
231 cm x 231 cm x 91 cm

7 Seats 64 Jets

800 lbs | 363 kg
395 gal | 1495 L

- (1) 5.0 BHP (3.0 HP continuous) 2-Spd
- (1) 5.0 BHP (3.0 HP continuous) 1-Spd
- (1) 3.0 BHP (1.5 HP continuous) 1-Spd

Maui

851L



91 in. x 91 in. x 36 in.
231 cm x 231 cm x 91 cm

6 Seats 51 Jets

800 lbs | 363 kg
380 gal | 1438 L

(1) 5.0 BHP (3.0 HP continuous) 2-Spd

(1) 5.0 BHP (3.0 HP continuous) 1-Spd

Fiji

851B



91 in. x 91 in. x 36 in.
231 cm x 231 cm x 91 cm

7 Seats 51 Jets

800 lbs | 363 kg
410 gal | 1552 L

(1) 5.0 BHP (3.0 HP continuous) 2-Spd

(1) 5.0 BHP (3.0 HP continuous) 1-Spd

Kona

751B



84 in. x 84 in. x 36 in.
213 cm x 213 cm x 91 cm

7 Seats 51 Jets

730 lbs | 331 kg
330 gal | 1249 L

(1) 5.0 BHP (3.0 HP continuous) 2-Spd

(1) 5.0 BHP (3.0 HP continuous) 1-Spd

BHP (Brake Horsepower) is a maximum value measured by the motor manufacturer with no load applied. HP: Horsepower. Dimensions, capacities and weights are approximate. Specifications are subject to change without notice. Spa images have been digitally rendered and may or may not show optional features. ~Volumes are measured per APSP-14 testing. Volumes in field may vary by customer preference.

Rio

751L



84 in. x 84 in. x 36 in.
213 cm x 213 cm x 91 cm

6 Seats 51 Jets

730 lbs | 331 kg
315 gal | 1192 L

(1) 5.0 BHP (3.0 HP continuous) 2-Spd
(1) 5.0 BHP (3.0 HP continuous) 1-Spd

Kawai

745L



84 in. x 78 in. x 34 in.
213 cm x 198 cm x 86 cm

6 Seats 45 Jets

760 lbs | 345 kg
270 gal | 1022 L

(1) 5.0 BHP (3.0 HP continuous) 2-Spd
(1) 5.0 BHP (3.0 HP continuous) 1-Spd

Lanai

531L



84 in. x 61 in. x 32 in.
213 cm x 155 cm x 81 cm

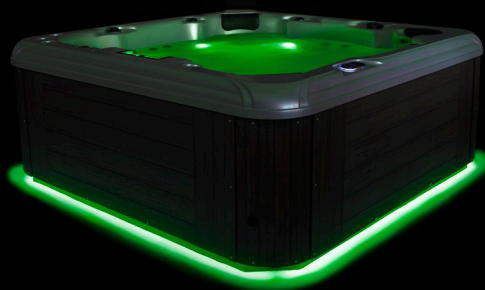
3 Seats 31 Jets

528 lbs | 239 kg
200 gal | 757 L

(1) 5.0 BHP (3.0 HP continuous) 2-Spd

BHP (Brake Horsepower) is a maximum value measured by the motor manufacturer with no load applied. HP: Horsepower. Dimensions, capacities and weights are approximate. Specifications are subject to change without notice. Spa images have been digitally rendered and may or may not show optional features. ~Volumes are measured per APSP-14 testing. Volumes in field may vary by customer preference.

PACIFIC AQUA GLOW LED



FEATURES AND UPGRADES

Standard Features

- Warranty:
 - Lifetime Structure^a
 - 5-Year Surface
 - 3-Year Parts, Labor, Plumbing and Electrical
 - 1-Year Cabinet
- Weather Guard Covers
- ThermalWrap Insulation System with ABS Bottom
- Ozonator
- Heater Valves
- Digital Control with LCD Color Illuminated Topside
- Heater: 5.5 kW for North America (60 Hz); 3.0 kW (2.0kW for Hawaii) for Export (50 Hz)
- 12 in. TropicFall (N/A on 735L)
- TropicStar LED: (3) 2 in. Lights , (1) 3.5 in. Spa Light
- Stainless Steel/Graphite Jets
- Maintenance Free Royalwood Cabinet
- 50 sq. ft. Filter
- Pillowfall LED (735L Model Only)
- Dual Aqua Foot Jets (961L, 861L, & 859B Model Only)

Optional Features

- Full Foam
(Required by law for certain States. Check with your local dealer)
- Elite Model Upgrade:
 - Circulation System with Microfilter
 - Full Foam**
 - All Acrylic Colors
- Stereo Systems (N/A on 531L):
 - 1) Bluetooth® Music Experience
Bluetooth Receiver, AM/FM, USB, Auxiliary Input, (4) Speakers, Subwoofer
 - 2) Auxiliary Input & Bluetooth Media Locker
Bluetooth Receiver, 3.5 mm Input for MP3 devices, (4) Speakers, SubwooferOptional (2) 3 in. Patio Speakers
- Water Purification:
 - 1) Optix AOP™
 - 2) O3 Infusing Chamber*
 - 3) FROG® @ease™ w/SmartChlor™+++
- Worldwide WiFi App Module (N/A on 735L Hawaii)
Download App for Smart Device to Control Spa Wirelessly
- LED Lighting
 - 1) Pacific Aqua Glow LED

ELITE MODEL UPGRADE

Includes all acrylic colors, full foam and circulation package with a microfilter.

The warranty printed in the booklet is for USA only. Please contact your local dealer for relevant warranty document in your region.

BHP: Brake Horsepower | HP: Horsepower | *Only Available with Elite Model Upgrade | **Required for Spas in the States of CA & CT | +Upgrade Color Except on Elite Models | ++965L Tahiti Available Color | +++Where Allowed By Law | DB: Dual Aqua Foot Jets |

^aUpgrade Color on Elite Models | ^aRefer to Owner's Manual for Full Description

Dual Aqua Foot Jets
available on these models:

WAIKIKI Elite

861L DB (Dual Aqua Foot Jets)

91 in. x 91 in. x 36 in.

231 cm x 231 cm x 91 cm

6 Seats 800 lbs 363 kg

61 Jets 380 gal 1438 L

(1) 5.0 BHP (3.0 HP continuous) 1-Spd

(1) 3.0 BHP (1.5 HP continuous) 1-Spd

(1) 6.0 BHP (3.0 HP continuous) 1-Spd

OAHU Elite

859B DB (Dual Aqua Foot Jets)

91 in. x 91 in. x 36 in.

231 cm x 231 cm x 91 cm

7 Seats 800 lbs 363 kg

59 Jets 400 gal 1514 L

(1) 5.0 BHP (3.0 HP continuous) 1-Spd

(1) 3.0 BHP (1.5 HP continuous) 1-Spd

(1) 6.0 BHP (3.0 HP continuous) 1-Spd

TAHITI Elite

961L DB (Dual Aqua Foot Jets)

108 in. x 91 in. x 36 in.

274 cm x 231 cm x 91 cm

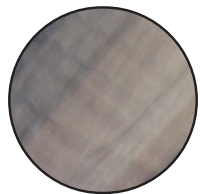
8 Seats 1100 lbs 499 kg

61 Jets 510 gal 1931 L

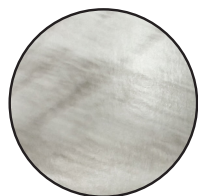
(2) 5.0 BHP (3.0 HP continuous) 1-Spd

(1) 3.0 BHP (1.5 HP continuous) 1-Spd

Acrylic Shell Colors



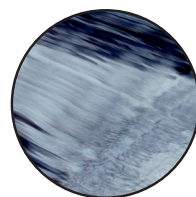
Tuscan Sun ++
Luster Swirl Series+



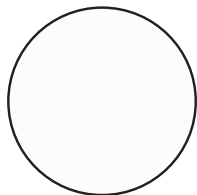
Glacier Mountain++
Metallix Series+



Midnight Canyon ++
Luster Swirl Series+



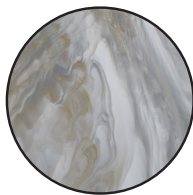
Storm Clouds
Luster Swirl Series+



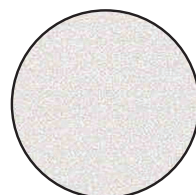
White



Silver Marble ++
Marble Series



Smoky Mountains ++
Luster Swirl Series+



White Pearl ++
Luster Series+

Royalwood Cabinets

Java



Charcoal Black



Grey



Weather Guard Covers

Pinot



Midnight



Stone





© 2023 May Manufacturing, LLC | Printed in the U.S.A. 4/2023

www.TropicSeasSpas.com

Built in the USA for the World

